



**Manufacturers of  
Bucyrus-Erie style  
Well Drills and Parts**

The 28-L is Buckeye Drill's medium-size model, packing the power for larger diameter industrial and municipal wells.

It also is ideal for oil field work, not only for drilling, but also for rapid servicing and tailing-in operations.

The 28-L drills from 6 to 30-inch (152.4 - 762 mm) diameter holes, down to 3,000 feet (914.4 m) and you can pack this rig with up to 4,000 pounds (1,814.4 kg) of tools.

The 28-L offers the following features:

- **Quick Rig . . .** Two-piece telescoping derrick is power-raised to its full 54 feet (16.46 m) extension.
- **Big Capacity Bull Reel . . .** Can pull 3,000 pounds (1,360.8 kg) of tools from a depth of 2,500 feet (762 m) in less than eight minutes.

- **Instant, Accurate Control . . .** Two speeds forward, one reverse on all drums . . . conveniently grouped operating levers.

- **Power Plant . . .** Six cylinder gasoline engine develops 78 hp at 1,775 rpm. Diesel engine optional.

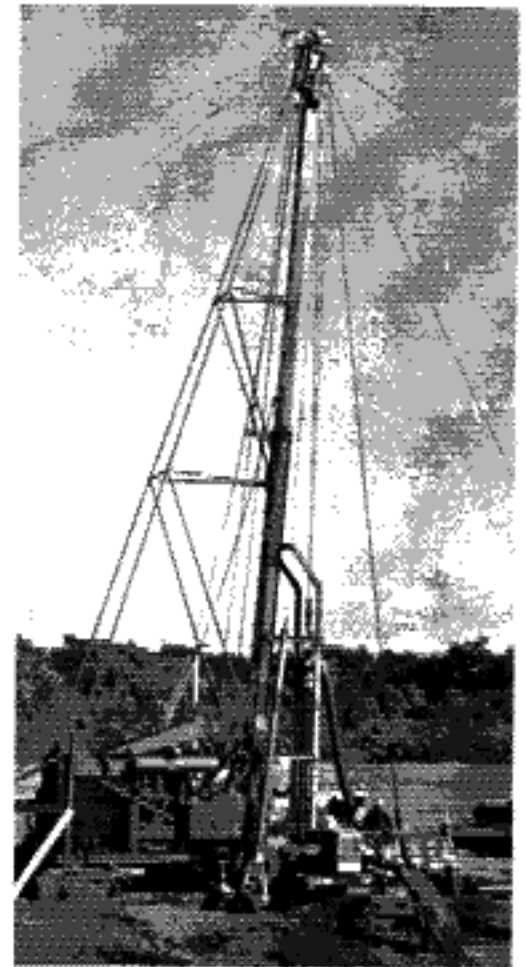
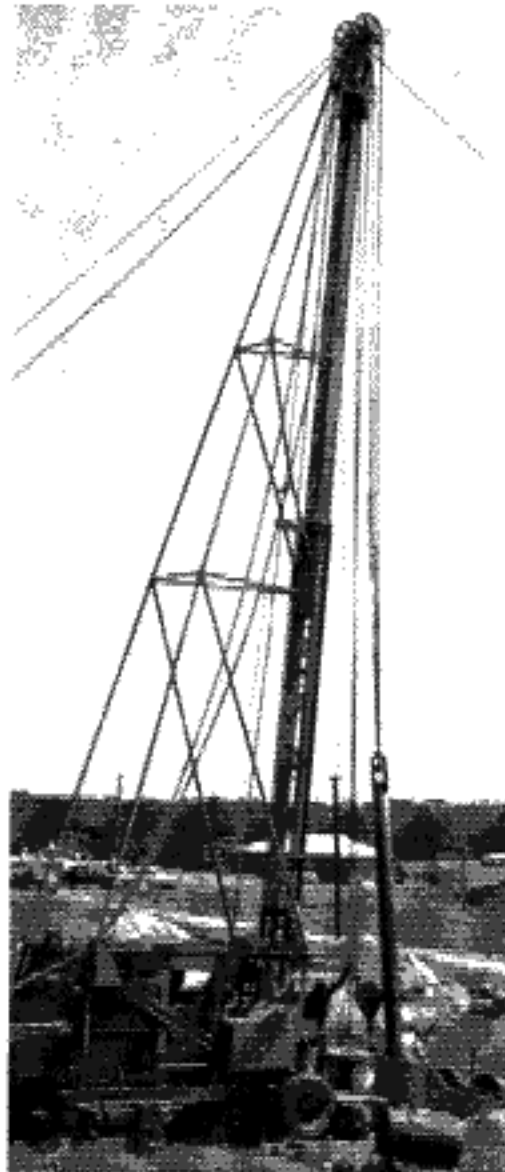
- **Outstanding Mobility . . .** With truck, semi-trailer or skid mounting available.

- **Gear-Driven Bull & Casing Reels . . .** Both feature two hoisting speeds and free wheeling for lowering.

- **Chain Driven Sand Reel . . .** Also features two speeds for hoisting and free wheeling for lowering.

- **Drum Speeds . . .** All drums and catheads offer two forward speeds and quick reverse, with friction clutch control.

- **Automatic Spooling . . .** Provides level winding of drill cable on bull reel. Also has deflecting sheave for casing line to assist in level winding.



### Dimensions:

Length, derrick down: Skid Mount .....	32'9"	9.98m
Semi-Trailer Mount .....	32'9"	9.98m
Width .....	8'0"	2.42m
Height, derrick down, Semi-Trailer .....	10'6"	3.20m
Weight: Gas Engine Skid Mount .....	19,375 lbs.	8,788.4 kg
Gas Engine Trailer Mount .....	21,050 lbs.	9,548.2 kg
Diesel Skid Mount .....	20,500 lbs.	9,298.7 kg
Diesel Trailer Mount .....	22,175 lbs.	10,058.5 kg

### Derrick Height:

Extended .....	54'1"	16.50 m
Telescoped .....	32'9"	9.98 m

### Bull Reel (gear driven) Spooling Capacity:

Cable Size .....	7/8 - 3/4"	22.2 - 19.1 mm
Divider .....	Adjustable	
Working Side Capacity .....	2,300 to 3, 520'	701 - 1,072.9 m
Storage Side Capacity .....	1,430 - 2,100'	135.9 - 643.1 m

### Sand Reel (chain driven) Spooling Capacity:

Cable Size .....	9/16 - 1/2"	14.3 - 12.7 mm
Reel Capacity .....	3,300 - 4,450'	1,005.8 - 1,356.4 m

### Calf Reel (gear driven) Derrick Capacity:

Cable Size .....	7/8 - 3/4"	22.9 - 19.1 mm
Reel Capacity .....	590 - 890'	179.8 - 271.3 m

### Calf Reel Max. Tackle Pull, 2-part line .....

30,000 lbs. 13,607.9 kg

### Sheaves:

Crown, cast steel, P.D., anti-friction .....	25-5/8"	650.9 mm
Sand, cast steel, P.D., anti-friction .....	20"	508.0 mm
Casing, cast steel, P.D., bronze bushed .....	22"	558.8 mm
Heel, cast steel, P.D., bronze bushed .....	21½"	546.1 mm
Beam, cast steel, P.D., bronze bushed .....	21½"	546.1 mm

**Shafting:** High carbon steel, machine turned

**Gears:** All-steel machine cut.

**Bearings:** All Anti-Friction Type.

It is the policy of Buckeye Drill Company to improve its products continually. The right is reserved to make changes in specifications or design which, in the opinion of this Company, are in accord with this policy, or which are necessitated by the unavailability of materials. The description herein is for the purpose of identifying the type of machine, and does not limit or extend the express warranty provisions in any contract of sale.

## Buckeye Drill Company

One of the Buckeye Companies

999 Zane St.  
P.O. Box 1190  
Zanesville, OH U.S.A. 43702

(614) 452-3641

FAX 454-3311

